

80X240CM

CATALOGUE 2023 - 15MM

The image features a background of marbled paper with a complex, organic pattern of veins in shades of grey, blue, and brown. The word "GLOSSY" is printed in a bold, black, sans-serif font, centered horizontally and vertically. The top portion of the image is a solid dark grey bar, and the left edge is a vertical white line.

**GLOSSY**

# CALACUTTA BORGHINI



80X240CM 15MM  
GLOSSY

# CARRARA



80X240CM 15MM

GLOSSY

# NERO MERQUINA



80X240CM 15MM  
GLOSSY

# SAINT LAURENT



80X240CM 15MM  
GLOSSY

# STATUARIO ORO



80X240CM 15MM

GLOSSY

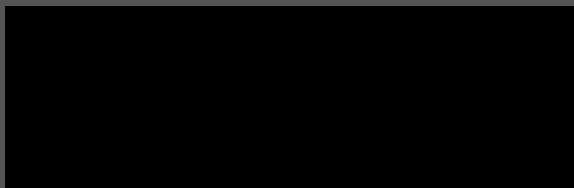
# VOLGA BLUE



80X240CM 15MM  
GLOSSY

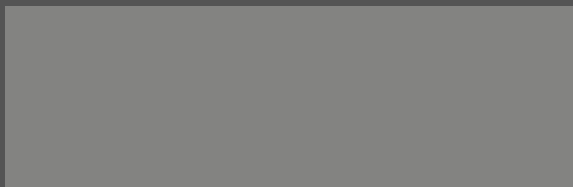


# DAIMOND BLACK



80X240CM 15MM  
GLOSSY

# STEEL GREY



80X240CM 15MM  
GLOSSY

# GRAPHITE GREY



80X240CM 15MM  
GLOSSY

MATT

# SMOKE AMBER



80X240CM 15MM

MATT

# SNP BLACK



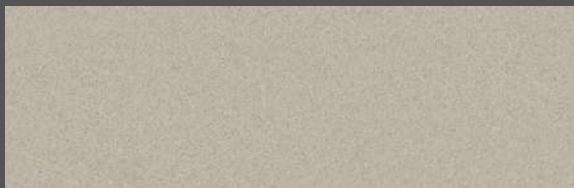
80X240CM 15MM  
MATT

# SNP GREY



80X240CM 15MM  
MATT

# SNP IVORY



80X240CM 15MM  
MATT



# SNP WHITE



80X240CM 15MM  
MATT

# TECHNICAL SPECIFICATIONS

CHARACTERISTIC	STANDARD AS PER ISO 13006-2018/ EN 14411 GR BII	MEAN VALUE OF GRESLAB	TEST METHOD
<b>Regulatory Properties</b>			
Deviation in Length and Width	± 0.30 % (± 1.00mm)	± 0.10 %	ISO 10545-2
Deviation in Thickness	± 0.00 % (± 0.50mm)	± 0.00 %	ISO 10545-2
Straightness in Side	± 0.30 % (± 0.80mm)	± 0.10 %	ISO 10545-2
Rectangularity	± 0.30 % (± 1.50mm)	± 0.10%	ISO 10545-2
Surface Flatness Central Curvature	± 0.40 % (± 1.80mm)	± 0.50 %	ISO 10545-2
Surface Flatness Edge Curvature	± 0.40 % (± 1.80mm)	± 0.50 %	ISO 10545-2
Surface Flatness Warpage	± 0.40 % (± 1.80mm)	± 0.50 %	ISO 10545-2
Surface Quality	> 95% defects free	> 95% defects free	ISO 10545-2
Small Color Difference (or Plain Colour)	$\Delta E < 1.00$	$\Delta E < 0.30$	ISO 10545-16
Glossiness (Polished)	as per mfg.	Gloss Value* 90	Gloss Meter 60°
Glossiness (Matt)	as per mfg.	3 <Gloss Value<7	Gloss Meter 60°
Glossiness (Satin/Posh)	as per mfg.	7 <Gloss Value<18	Gloss Meter 60°
<b>Structural Properties</b>			
Water absorption	± 0.50 %	± 0.00 %	ISO 10545-3
Bulk density	as per mfg.	Min. 2.28 g/cc	ISO 10545-3
<b>Massive Mechanical Properties</b>			
Modulus of rupture	Min. 35.0 N/mm <sup>2</sup>	Min. 42.0 N/mm <sup>2</sup>	ISO 10545-4
Breaking strength thickness <7.5	Min. 700.0 N	Min. 1000.0 N	ISO 10545-4
Breaking strength thickness >7.5	Min. 1300.0 N	Min. 1800.0 N	ISO 10545-4
Breaking strength thickness >90mm	Min. 1300.0 N	Min. 7500.0 N	ISO 10545-4
<b>Surface Mechanical Properties</b>			
MCHS hardness #	as per mfg.	Glossy Min. 4 / Posh Min. 6	BS EN 15778
Surface abrasion resistance #	as per mfg.	Glossy Min. 2 / Posh Min. 3	ISO 10545-7
Deep abrasion resistance #	Max. 175mft	Max. 132mft	ISO 10545-6
<b>Thermal Hygroscopic Properties</b>			
Moisture expansion	Max. 0.06N(0.6mm)/m	Max. 0.02mm/m	ISO 10545-10
Thermal expansion(COE) at 100°C	as per mfg.	Max. 6.0 x 10 <sup>-6</sup>	ISO 10545-8
Thermal shock resistance	Min. 10 Cycle	Min. 70 Cycle	ISO 10545-9
Impact resistance(COR) #	Min. 0.55	Min. 0.35	ISO 10545-5
Frost resistance	as per mfg.	Frost Proof	ISO 10545-12
<b>Chemical Properties</b>			
Resistance to staining glazed	Min. Class 3	Min. Class 4	ISO 10545-14
Resistance to household chemicals & swimming pool salts glazed	Min. Class GB	Min. Class CA	ISO 10545-13
Resistance to low concentrate acid and alkalis glazed	as per mfg.	Min. Class CLB**	ISO 10545-13
Resistance to high concentrate acid and alkalis glazed	as per mfg.	Min. Class CHB**	ISO 10545-13
<b>Safety Properties</b>			
Skid resistance(DCOF-DR) ##	as per mfg.	Glossy POC(*) / Posh >P1(**)>0	BS 7976-2
Slip resistance(DCOF-R value) ##	as per mfg.	R9 to R11	DIN 51130
Fire resistance	as per mfg.	Fire Proof	NA

\* With Nano polished

\*\* Except Hydrofluoric Acid & its compound

# Tiles Intended for use on floor

## As per customer requirement

## 80X240CM 15MM